

S.E. 1/4 OF N.E. 1/4
SECTION 20, T.6N., R.1W., S.L.B. & M.

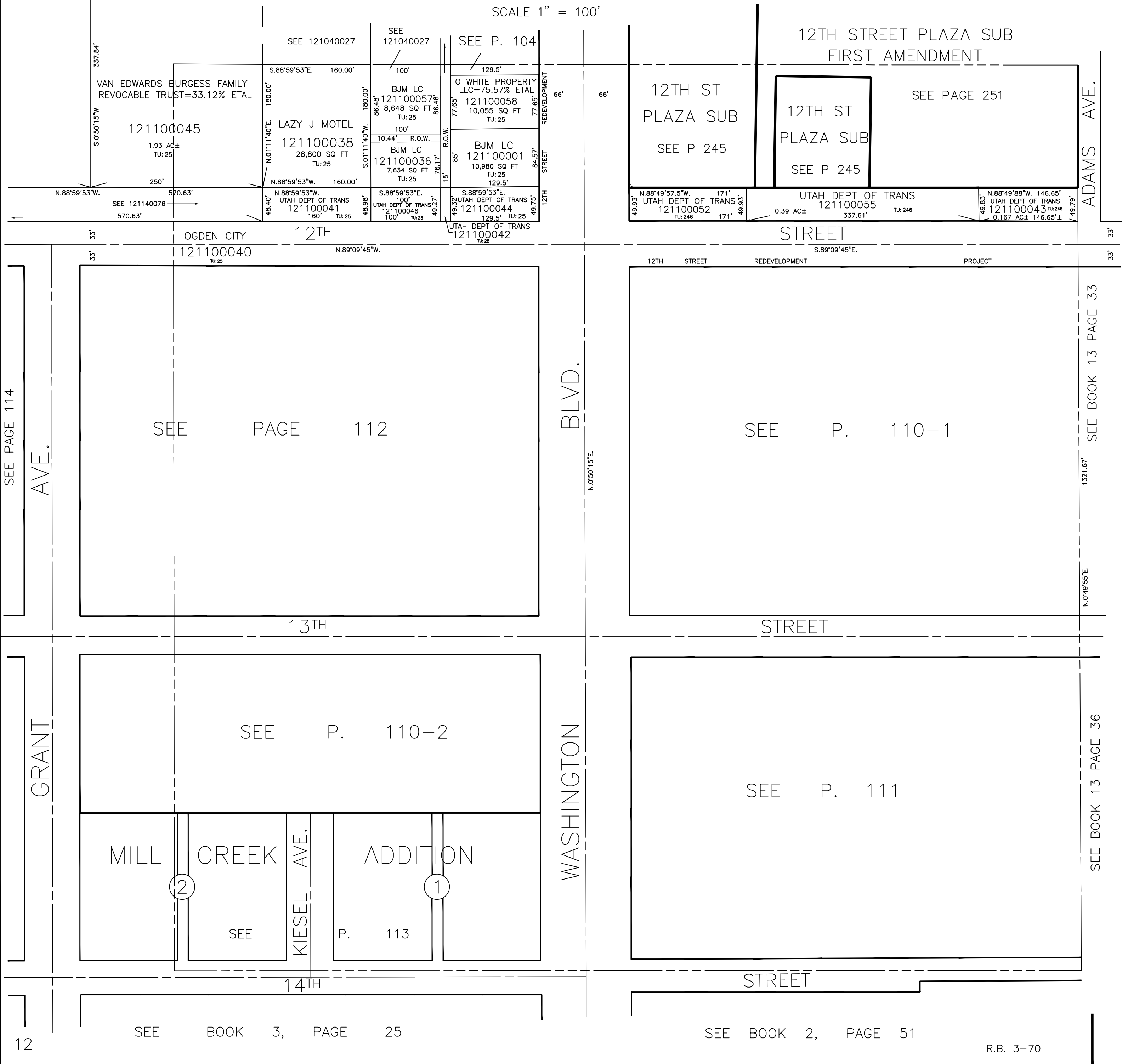
110

ALSO SEE P. 110-1, & P. 110-2

TAXING UNIT: 25, 246

IN OGDEN CITY

SCALE 1" = 100'



12

SEE BOOK 3, PAGE 25

SEE BOOK 2, PAGE 51

R.B. 3-70

SEE PAGE 114

AVE.

SEE PAGE 112

BLVD.

SEE P. 110-1

SEE BOOK 13 PAGE 33

GRANT

SEE P. 110-2

WASHINGTON

SEE P. 111

SEE BOOK 13 PAGE 36

MILL CREEK ADDITION

2

1

SEE P. 113

KIESEL AVE.

14TH

STREET

1321.67'

1321.67'

33'

ADAMS AVE.

33'